

Shafston International College



# ELICOS

## course guide

# 2024



**SHAFSTON**  
www.shafston.edu

BRISBANE & GOLD COAST

# WELCOME TO SHAFSTON INTERNATIONAL COLLEGE

Deciding your future college can be a daunting process. At Shafston, you will gain skills and knowledge that will not only help you excel in your English language capability but also in your academic future. Study and make friends, and become part of Shafston's diverse and creative community.

As one of Australia's leading ELICOS providers and one of the top ten language schools in the world, Shafston is renowned for delivering quality education to our students and alumni. With dedicated teachers and staff, a unique, heritage-listed city campus by the river and academic integrity, Shafston gives you the ideal platform to succeed at college and beyond.

Shafston International College has been operating since 1996, and for the last twenty-seven years, we've provided world-class international education to an excess of 120,000 students and counting, from over 100 countries. We offer a wide range of intensive English language programs designed to help our students achieve their goal while studying at Shafston.

We look forward to seeing you soon at Shafston.

**The Shafston Team**





# SO, WHY SHAFSTON?

**01**

## **28 YEARS OF TEACHING ENGLISH**

Founded in 1996, we've been educating students in both English language and Vocational Courses for 28 years and counting.

**03**

## **ON-CAMPUS ACCOMODATION**

We have one student apartment block situated right on campus.

**05**

## **INTENSIVE PROGRAMS**

Our English classes and assessments are designed to feature practical learning and skills development.

**07**

## **HIGHLY-QUALIFIED TEACHERS**

Our teachers are dedicated to educating students in both English language and Vocational Courses, with our teachers coming from a variety of backgrounds and cultures.

**02**

## **UNIQUE RIVERSIDE CAMPUS**

Our Brisbane Campus is right next to the Brisbane River in a heritage-listed villa, and close to the city and surrounds.

**04**

## **WORLD CLASS FACILITIES**

Our campus has a range of learning resources available.

**06**

## **OFFICIAL TEST CENTRE**

Study with us with confidence that you can take the official Cambridge test on-campus at Shafston.

**08**

## **INTERNATIONAL COMMUNITY**

Our community is diverse and unique, with over 120,000 students from over 100 countries, we're always ready to welcome all international students to be a part of Shafston family.

## **CONTENT LIST**

### **ABOUT SHAFSTON**

Why Choose Shafston?	2
Brisbane Campus	4
Gold Coast Campus	6
Our Students	8
Teacher Profile	8

### **OUR PROGRAMS**

Program Overview	9
General English	10
Shafston FLEXI Cambridge	12
IELTS Preparation	14
Pathway Partners	15
Job Ready Program	16
Student Experience and Life	17
Primary English Preparation Program (PEP)	18
High School Preparation (HSP)	20
Young Learners Camp	22
Study Tour	24

### **OTHERS**

Demi Pair	24
Student Living	25
Homestay	26
Airport Service	27

# BRISBANE CAMPUS



46 Thorn St, Kangaroo Point  
Brisbane QLD 4169 Australia.



## ABOUT BRISBANE CITY

As the capital city of Queensland, Brisbane is a vibrant, culturally diverse city home to over 200 different nationalities, and 220 languages. Brisbane is known for its all-year-round warm subtropical weather, urban precincts, outdoor lifestyle and friendly locals. Study and learn English in an expanding city with a laid-back, welcoming feel of a smaller community in a metropolitan environment.

## TRANSPORTATION



CityCat ferry into the CBD, which is a 5 minute walk from campus



10 minute ride to Fortitude Valley & the City Centre by bus



20 minutes ride to the city centre

## COST OF LIVING

Brisbane's average cost of living per week is roughly between AU\$400 to \$750\*.

### Accommodation

AU\$180 – \$400/week

### Public Transport

AU\$70 – \$110/week

### Food

AU\$140 – \$280/week

### Mobile & Internet

Minimum \$30/month

## ABOUT OUR CAMPUS

Located right next to the river, Shafston's Brisbane campus is in a convenient proximity to the CBD, and is walking distance to public transport, restaurants and music venues. Nestled in a heritage-listed villa with over 170 years of history.

Brisbane is known for its all-year-round warm subtropical weather, study and learn English in a growing city with a laid-back, welcoming feel of a smaller community in a city environment.

### FOOD

Brisbane and its surrounds are full of fantastic cafes, restaurants and food options. At Shafston, you can find our 'River Room' cafeteria, which overlooks the Brisbane river, where we offer food and refreshments to residents and students.

### ENTERTAINMENT

Our amazing river city offers lots of walking and bicycle paths to explore the city, river and parks. Our campus is close to Fortitude Valley which is the heartbeat of urban Brisbane, with an exciting nightlife. Kangaroo Point cliffs, just a 5 minute walk from our campus is a popular place for picnics, abseiling and rock climbing.

### LIBRARY & FACILITIES

Shafston's Brisbane campus is a large school with garden areas and river views. We have a dedicated study area and library for our students. We have over 50 air-conditioned classrooms, computer labs, relaxing lounge areas, free Wi-Fi and plenty of events and activities.



**Over 1,000**  
student capacity



**Air-conditioned**  
classrooms



**Campus with**  
garden areas and  
river views



**Relaxing**  
lounge areas



**Free internet**  
and wi-fi



**Shafston**  
Library



**On-campus**  
cafeteria



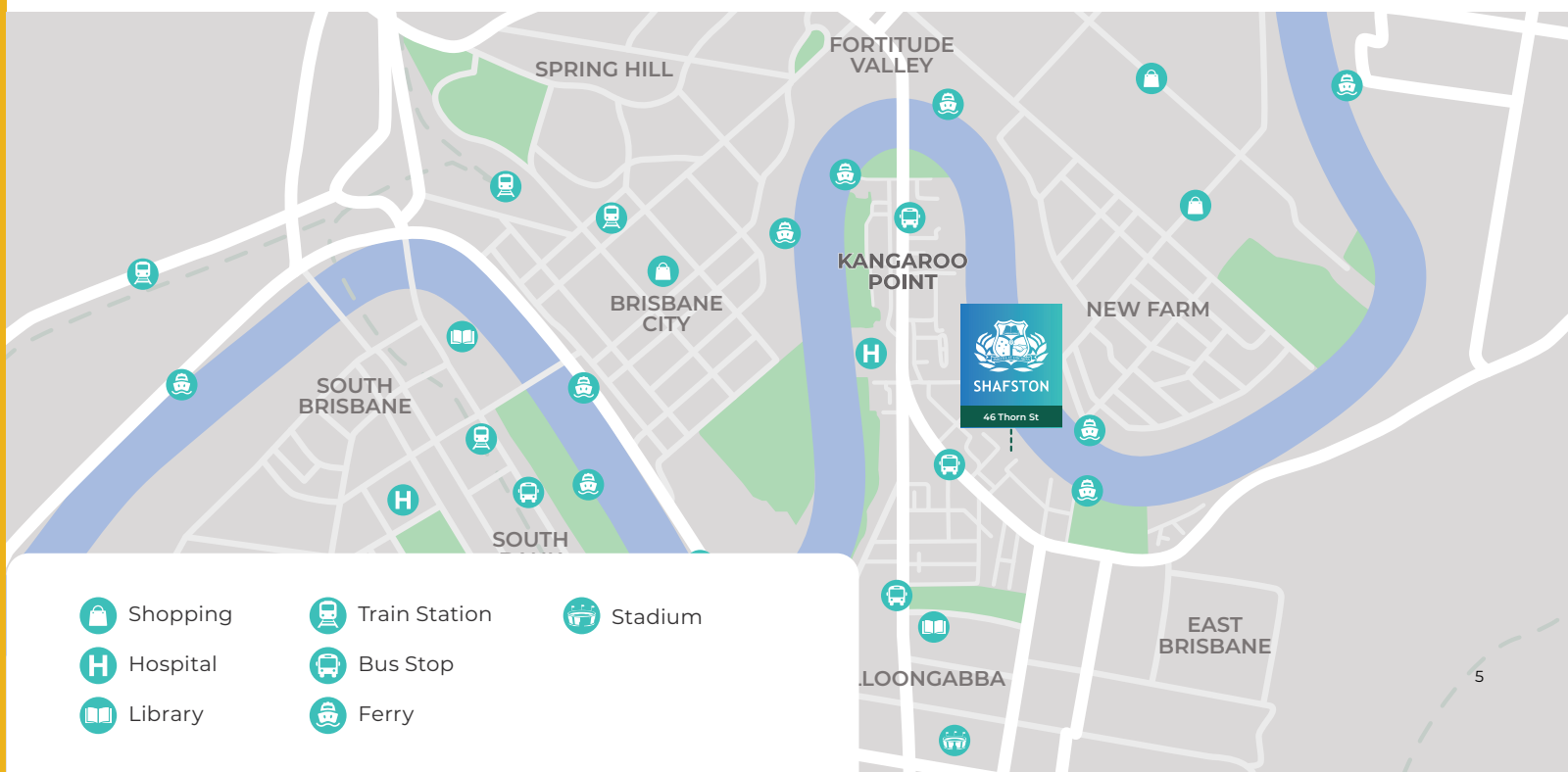
**On-campus**  
accommodation



**Vending**  
machines



**Multiple study**  
facilities &  
computer labs



# GOLD COAST CAMPUS

72 Nerang St, Gold Coast  
Southport QLD 4215



## ABOUT GOLD COAST

Known as a famous tourist location globally, the Gold Coast is well-known for its sandy beaches, unique skyline and is a popular spot for water sports, such as surfing. Only an hours drive from Brisbane, studying at Shafston GC Campus allows you to have the quintessential Australian culture experience. Learn English in a tropical paradise, finish your class and head straight to the beach.

## TRANSPORTATION



G:Link Tram line which connects you up and down the coast



Train to Brisbane City



Plenty of buses that go as far as Tweed Heads, NSW.

## COST OF LIVING

Gold Coast's average cost of living per week is roughly between AU\$400 to \$750\*.

### Accommodation

AU\$135 – \$400/week

### Public Transport

AU\$40 – \$100/week

### Food

AU\$90 – \$125/week

### Mobile & Internet

Minimum AU\$30/month

## ABOUT OUR CAMPUS

Shafston's Gold Coast Campus is only walking distance from the local beaches and driving distance from the world-famous Main Beach of the Surfers Paradise. Located in the central suburb of Southport, our campus offers students a unique lifestyle of study and play in a multicultural hub.

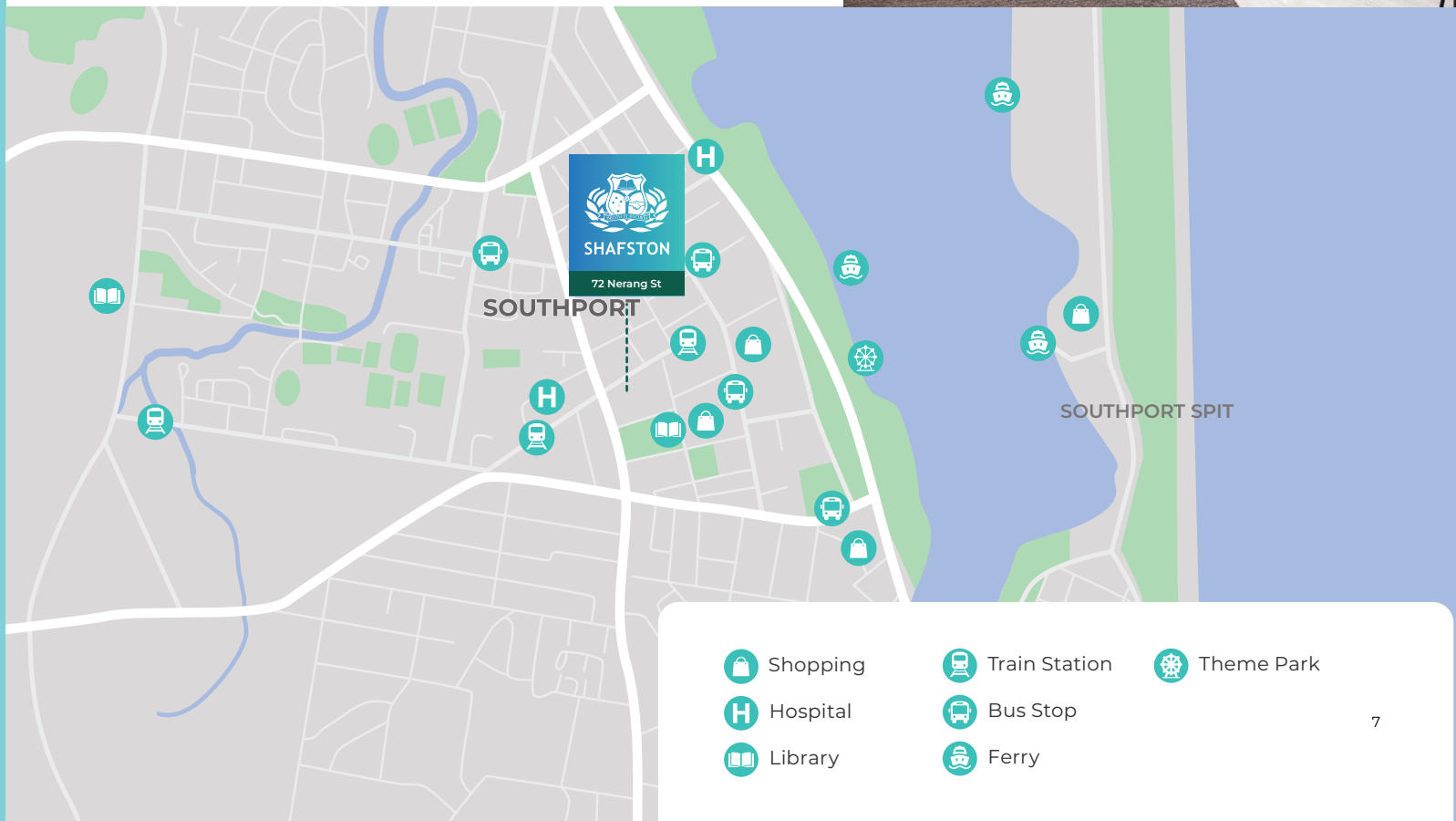
## CLASSROOM

Shafston's Gold Coast campus classrooms are modern, bright and spacious with a dedicated student activity room for recreation with computers readily available. There's a kitchen with microwaves and refrigerator for student use and all reading books, English language textbooks for self-study and magazines are available to borrow for free.



## FACILITIES NEAR CAMPUS

- ✓ Australia Fair Metro
- ✓ Gold Coast Aqua Park
- ✓ Southport Library
- ✓ Southport Ferry Wharf
- ✓ Southport Tram Station



# OUR STUDENTS



**SUCHON (THAILAND)**  
**IELTS PREPERATION**

“I love the IELTS class. All teachers are friendly and skillful. They have made me feel confident with my English skills and also have taught me great techniques and structure for the exam”



**FLORIANA (ITALY)**  
**GENERAL ENGLISH**

“I highly recommend Shafston. The teachers and their methodology and professionalism makes learning a new language so much easier. I love the campus and the activities that the school offers to the students”



**CLAIRE (SWITZERLAND)**  
**CAMBRIDGE, CAE**

“Cambridge is an intensive course that has helped me a lot to improve my English skills. I decided to study at Shafston because I heard excellent feedback from my colleagues”

# OUR TEACHERS

“ The best part of being at Shafston is being able to teach a great mix of students from all around the world as well as work with a wonderful group of people. It's rewarding seeing students improve their language abilities and life skills. Their energy is contagious „

**Adrian Wyeth**



“ Being a teacher with Shafston allows me to make a difference in the lives of people from all corners of the world - working with my students every day, and seeing them thrive and succeed with their English skills, makes this job one of the best there is ”

**James Morris**



# PROGRAM OVERVIEW

## SHAFSTON ENGLISH LEVEL ENTRY GUIDE

Beginner Level	Elementary Level	Pre-Intermediate Level	Intermediate Level	Upper Intermediate Level	Advanced Level	Proficiency Level
<b>A1</b>	<b>A2</b>		<b>B1</b>	<b>B2</b>	<b>C1</b>	<b>C2</b>
General English 1	General English 2	General English 3	General English 4	General English 5	General English 6	
			IELTS Preparation			
			Cambridge PET Preparation	Cambridge FCE Preparation	Cambridge CAE Preparation	Cambridge CPE Preparation
HSP 1	HSP 2	HSP 3	HSP 4	HSP 5	HSP 6	
PEP 1	PEP 2	PEP 3	PEP 4			

Shafston International College offers a wide range of English courses that are customised for different entry levels. Our course are aligned with the Common European Framework of Reference (\*CEFR)

## SHAFSTON ENGLISH EXAM CENTRE



**Cambridge Assessment  
English**

Authorised Linguaskill Agent

There is an increasing global demand for online examinations. Cambridge ESOL is at the cutting edge of developing and managing computer-based examinations. Shafston Cambridge Exam Centre, are proud to be part of that worldwide process. Shafston Cambridge Exam Centre (SCEC) is working with Cambridge ESOL to deliver these traditional exams in a manner that reflects market demand in the twenty-first century.

Shafston Cambridge Exam Centre (SCEC) is an authorised Centre for Cambridge ESOL in Australia.

For further information please visit: [shafston.edu/cambridge-exam-center](http://shafston.edu/cambridge-exam-center)



Download the Sample Timetable at [shafston.edu/courses/general-english](http://shafston.edu/courses/general-english)

CRICOS: 106228K

# GENERAL ENGLISH

## ABOUT THE COURSE

Our General English course prepares students for the kind of English they will need in everyday situations. Class programs at Shafston College are designed to effectively develop communication skills and fluency in core skills such as speaking, listening, reading, writing and grammar.

Our teaching styles encourage interactive language use so you will have many opportunities to practise the skills you are learning.

## ENTRY REQUIREMENTS

Pre-test required



### CAMPUS

Brisbane: Morning & Afternoon class  
Gold Coast: Morning class



### MODE OF STUDY

20 + up to 5 hours per week



### DURATION

2 - 50 weeks



### KEY DATE

Start Any Monday  
(flexible start date)



### COURSE CONTENT

Grammar, Vocabulary, Reading, Listening, Speaking, Writing

## 20+5 HOURS

Our class time involves 20 + up to 5 hours per week of intensive tuition, assessment and optional Shafston Plus, no need for 'self-study' during your class hours.

## GENERAL ENGLISH SKILLS CLASS\*

Learn English in your way by focusing on improving each skill - Grammar, Speaking, Listening, and Vocabulary.

\* Pre Intermediate - Advanced

Beginner - Elementary: GE continuation.

## SHAFSTON PLUS

Build on what you learnt in class with Shafston Plus, additional, optional classes covering Grammar, English Communication, Job Readiness, and Academic consulting.

### Sample Schedule:

MON & WED: Grammar Workshop

TUE: Job Workshop

THU: Communication Workshop

FRI: Academic Consulting  
(Appointment required)



## GENERAL ENGLISH (MORNING) SAMPLE TIMETABLE

Time	Mon	Tue	Wed	Thu	Fri
8:30 - 10:00 Core Class	<b>Grammar Input</b> · Past Simple Rules and Contexts	<b>Past Tenses Review</b>	<b>Vocabulary</b> · Movies and Blockbusters	<b>Social Vocabulary</b> · Adverbs of Manner	<b>Writing</b> · Narrative Creation
10:00 - 10:15	<b>Break</b>				
10:15 - 11:45 Core Class	<b>Grammar Input</b> · Past Continuous Rules and Contexts	<b>Past Tenses Applied Communication</b>	<b>Reading for Gist and Theme</b> · James Bond	<b>Social English</b> · Prepositions of Time	<b>Unit Review and Tailored Revision</b>
11:45 - 12:15	<b>Break</b>				
12:15 - 13:15 Skills Class	<b>Grammar Focus</b>	<b>Speaking Focus</b>	<b>Listening Focus</b>	<b>Vocabulary Focus</b>	<b>Review Test</b>
13:15 - 13:30	<b>Break</b>				
13:30 - 14:30 Optional	<b>Shafston Plus</b>	<b>Shafston Plus</b>	<b>Shafston Plus</b>	<b>Shafston Plus</b>	<b>Academic Consultation</b>

## GENERAL ENGLISH (AFTERNOON) SAMPLE TIMETABLE

Time	Mon	Tue	Wed	Thu	Fri
13:30 - 15:00 Core Class	<b>Grammar Input</b> · Past Simple Rules and Contexts	<b>Past Tenses Review</b>	<b>Vocabulary</b> · Movies and Blockbusters	<b>Social Vocabulary</b> · Adverbs of Manner	<b>Writing</b> · Narrative Creation
15:00 - 15:15	<b>Break</b>				
15:15 - 16:45 Core Class	<b>Grammar Input</b> · Past Continuous Rules and Contexts	<b>Past Tenses Applied Communication</b>	<b>Reading for Gist and Theme</b> · James Bond	<b>Social English</b> · Prepositions of Time	<b>Unit Review and Tailored Revision</b>
16:45 - 17:00	<b>Break</b>				
17:00 - 18:00 Skills Class	<b>Grammar Focus</b>	<b>Speaking Focus</b>	<b>Listening Focus</b>	<b>Vocabulary Focus</b>	<b>Review Test</b>



Download the Sample Timetable at [shafston.edu/courses/shafston-flexi-cambridge](http://shafston.edu/courses/shafston-flexi-cambridge)

CRICOS: 106244K

# SHAFSTON FLEXI CAMBRIDGE

## ABOUT THE COURSE

Shafston Flexi Cambridge course helps students develop the English skills needed in real-life situations. The range of Cambridge courses is from pre-intermediate to post-advanced.

- Flexi start date (minimum 5 weeks)
- No compulsory Cambridge Exam fee (Extra fee payable if you enrol in the official Cambridge Computer-based Exam)
- Weekly in-class Cambridge Exam Skills assessment  
Regular 'mock' exams
- Weekly Skills and Review session (includes Student-Teacher individual feedback and consultations)
- Progress reports issued regularly

## ENTRY REQUIREMENTS

- Pre-test required
- Minimum entry level – Intermediate (B1)



### CAMPUS

Brisbane & Gold Coast



### MODE OF STUDY

20+ up to 5 hours per week



### DURATION

5 - 36 weeks



### KEY DATE

Start Any Monday  
(flexible start date)

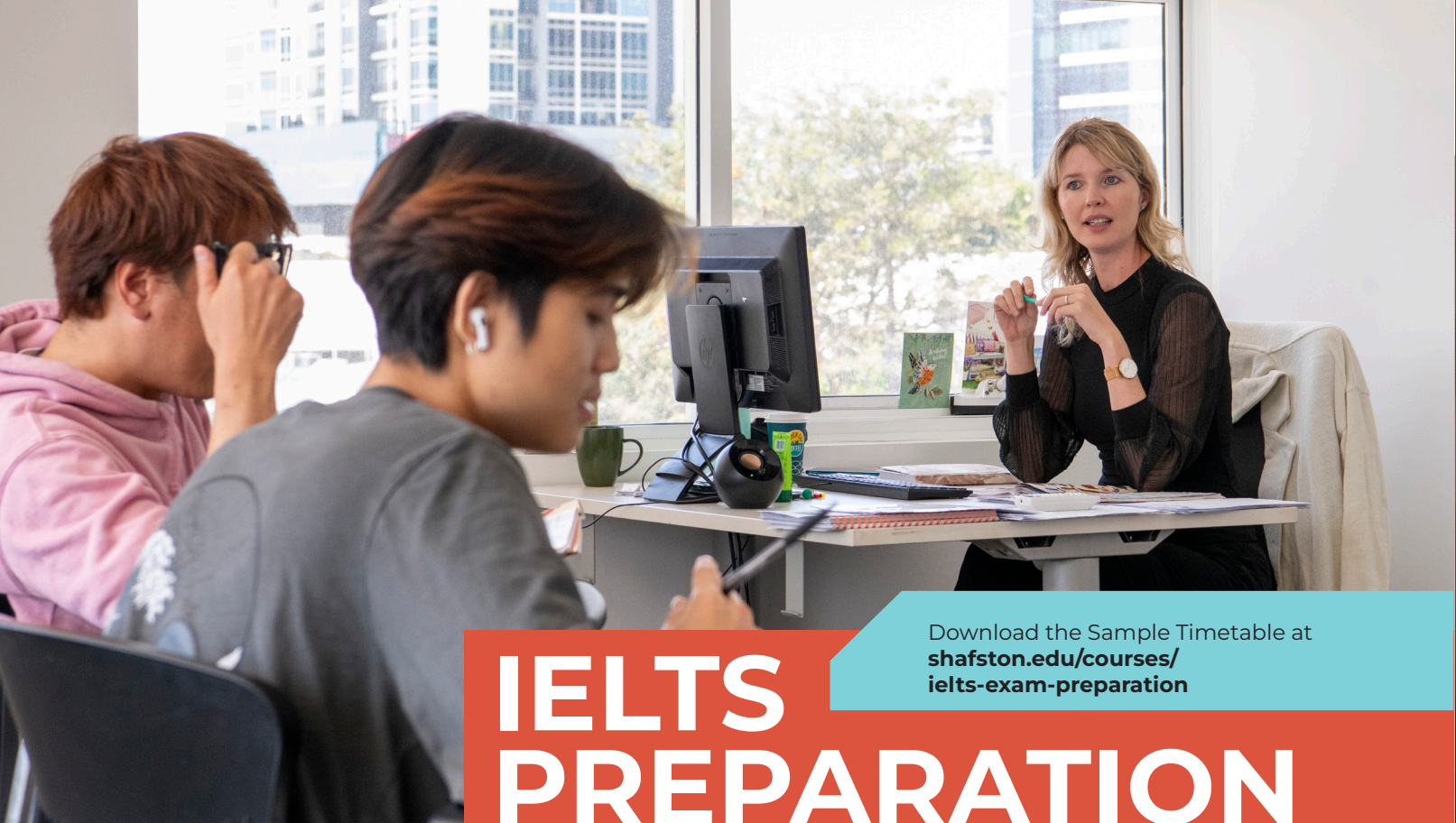




## CAMBRIDGE SAMPLE TIMETABLE

Time	Mon	Tue	Wed	Thu	Fri
8:30 - 10:00 Core Class	<b>Topic Introduction</b> · Environment	<b>Reading</b> · Multiple Choice Listening · Part 3&4	<b>Speaking Part 2</b> · Describe any news about the environment issue you recently received	<b>Vocabulary Input</b> · Using Emphasis and Hyperbole	<b>Writing Test Feedback and Re-Write</b>
10:00 - 10:15	<b>Break</b>				
10:15 - 11:45 Core Class	<b>Writing Task 1</b> · Analysing charts, tables, and line graphs Listening · part 1&2	<b>Speaking Part 3</b> · How could the government help prevent pollutions?	<b>Reading</b> · Matching information, headings and sentence endings	<b>Writing Task 2</b> · Advantage/ Disadvantage, Solutions, and Opinion	<b>Unit Review and Tailored Revision</b>
11:45 - 12:15	<b>Break</b>				
12:15 - 13:15 Skills Class	<b>Test Practice &amp; Review - Writing Task 1</b>	<b>Test Practice &amp; Review - Speaking</b>	<b>Test Practice &amp; Review - Reading</b>	<b>Test Practice &amp; Review - Writing Task 2</b>	<b>Test Practice &amp; Review - Listening</b>
13:15 - 13:30	<b>Break</b>				
13:30 - 14:30 Optional	<b>Shafston Plus</b>	<b>Shafston Plus</b>	<b>Shafston Plus</b>	<b>Shafston Plus</b>	<b>Academic Consultation</b>





# IELTS PREPARATION

Download the Sample Timetable at [shafston.edu/courses/ielts-exam-preparation](http://shafston.edu/courses/ielts-exam-preparation)

CRICOS: 106231D

## ABOUT THE COURSE

The IELTS programs at Shafston introduce and prepare students taking the IELTS test. The IELTS test can be used for immigration and educational purposes.

The IELTS preparation course is for students at intermediate level or above. This program thoroughly prepares the student for all aspects of the IELTS examination – reading, writing, listening and speaking.

The Foundation program consists of twelve modules and the Preparation program fifteen modules – each with a particular functional grammar and topic area focus.

## ENTRY REQUIREMENTS

Pre-test required

Entry level – Intermediate (B1+)



### CAMPUS

Brisbane & Gold Coast



### MODE OF STUDY

20 + up to 5 hours per week



### DURATION

2 - 15 weeks



### KEY DATE

Start Any Monday  
(flexible start date)



### COURSE CONTENT

Preparation for official IELTS Exam

## IELTS PREPARATION SAMPLE TIMETABLE

Time	Mon	Tue	Wed	Thu	Fri
8:30 - 10:00 Core Class	<b>Topic Introduction</b> · Environment	<b>Reading</b> · Multiple Choice Listening - Part 3&4	<b>Speaking Part 2</b> · Describe any news about the environment issue you recently received	<b>Vocabulary Input</b> · Using Emphasis and Hyperbole	<b>Writing Test Feedback and Re-Write</b>
10:00 - 10:15	<b>Break</b>				
10:15 - 11:45 Core Class	<b>Writing Task 1</b> · Analysing charts, tables, and line graphs Listening - part 1&2	<b>Speaking Part 3</b> · How could the government help prevent pollutions?	<b>Reading</b> · Matching information, headings and sentence endings	<b>Writing Task 2</b> · Advantage/ Disadvantage, Solutions, and Opinion	<b>Unit Review and Tailored Revision</b>
11:45 - 12:15	<b>Break</b>				
12:15 - 13:15 Skills Class	<b>Test Practice &amp; Review - Writing Task 1</b>	<b>Test Practice &amp; Review - Speaking</b>	<b>Test Practice &amp; Review - Reading</b>	<b>Test Practice &amp; Review - Writing Task 2</b>	<b>Test Practice &amp; Review - Listening</b>
13:15 - 13:30	<b>Break</b>				
13:30 - 14:30 Optional	<b>Shafston Plus</b>	<b>Shafston Plus</b>	<b>Shafston Plus</b>	<b>Shafston Plus</b>	<b>Academic Consultation</b>



# PATHWAY PARTNERS



CRICOS 03220G



CRICOS 03804F



CRICOS 03789M



CRICOS 01737F / 00233E



CRICOS 01931B



CRICOS 038041A



CRICOS 03020E RTO NO. 0275

+ MORE



# JOB READY PROGRAM

Our Job Ready Program is designed to provide you with the essential skills, knowledge and confidence to undertake employment in Australia during your studies. Having a job whilst studying is a great way to learn how to budget and pay for your expenses independently, and also a hands on experience in learning English.



## BARISTA

Learn how to make espresso, coffee and drinks with our Barista course. This program will provide you with the basic skills and knowledge of making coffee, whilst honing your English communication. You'll also learn standard operation skills and maintenance of the espresso machine and equipment.



## HOSPO COURSE

Learn everything you need to know to begin your career as a waiter or waitress with valuable customer service skills, the correct English vocabulary and confidence needed with our Hospitality course.

## SAMPLE TIMETABLE

**1:30 pm - 2:45 pm:**

Waiter & Barista Knowledge Session

**2:45 pm - 3:00 pm:**

Break

**3:00pm - 4:30 pm:**

Practical Coffee and Service Practice Session

1. ONLY AVAILABLE FOR STUDENTS AT PRE-INTERMEDIATE OR ABOVE ENGLISH.
2. COURSES DELIVERED BY VARIOUS REGISTERED TRAINING ORGANISATIONS.
3. PLEASE REGISTER AT RECEPTION.





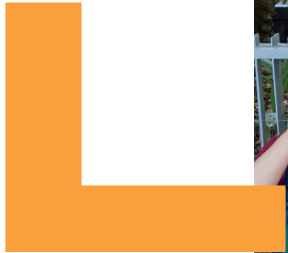


# STUDENT EXPERIENCE AND LIFE

## STUDENT ACTIVITY

As a Shafston student, you'll have the opportunity to participate in various activities and events that will help you practice your English in a fun, creative environment where you can develop confidence, gain a new hobby and make lifelong friends.





# SHAFSTON FOR SCHOOL

## PRIMARY ENGLISH PREPARATION PROGRAM (PEP) CRICOS: 107819A

Shafston's Primary English Preparation Program (PEP) specifically targets young learners who are seeking to learn English and continue their schooling in Australia. Our PEP program is a pathway for learners, who may only have some basic English skills, to be pathway to study in mainstream primary school after completion.

The alternate pathway is for students to continue into the High School Preparation program at Shafston, then exit to a mainstream high school. The age range for students is between 8 to 11 years old. PEP course students must reside with a "nominated guardian" approved by the Department of Home Affairs.

### ENTRY REQUIREMENTS

Pre-test required  
Entry level – Beginner (Pre A1 - A2)



**CAMPUS**  
Brisbane



**MODE OF STUDY**  
25 hours per week



**DURATION**  
2 - 40 weeks



**INTAKE DATES**  
Set Every Monday during weeks 1-9 of each term  
(excluding public holidays)



**AGES**  
7 - 12



**LEVEL**  
4 level - PEP1 TO PEP4  
(Each level is 10 weeks in duration)

## PRIMARY ENGLISH PREPARATION LEVEL GUIDE

Beginner	Elementary	Pre-Intermediate	Intermediate
A1	A2		B1
PEP1	PEP2	PEP3	PEP4

## PEP SAMPLE TIMETABLE

Time	Mon	Tue	Wed	Thu	Fri
8:30 - 9:45 Class	<b>Core Grammar Input</b> - Past Simple - Rules and Contexts	<b>Core Vocabulary Input</b> - Family and Friends - Rules and Contexts	<b>English for Science</b> - Growing a Plant - Experimentation	<b>Core Grammar - Continued Applied Communication</b>	<b>Unit Review and Tailored Revision</b>
9:45 - 10:00	<b>Break</b>				
10:00 - 11:15 Class	<b>Core Grammar Output</b> - Past Simple - Applied Communication	<b>Core Vocabulary Output</b> - Family and Friends - Applied Communication	<b>Writing Input</b> - Planning and Writing a Scientific Report	<b>Core Vocabulary - Continued Applied Communication</b>	<b>Review Test and Feedback</b>
11:15 - 12:00	<b>Lunch</b>				
12:00 - 13:30 Class	<b>English for Science - Growing a Plant - Theory and Planning</b>	<b>English for Maths</b>	<b>English for Health and Physical Education</b>	<b>English for History and Geography</b>	<b>Social English Expressions - Communication Practice</b>
13:30 - 13:45	<b>Break</b>				
13:45 - 14:15 Class	<b>Interactive Literacy Activities</b>	<b>Interactive Listening Activities</b>	<b>Physical Activities on Campus</b>	<b>Interactive Numeracy Activities</b>	<b>Physical Activities on Campus</b>

## PRIMARY ENGLISH PREPARATION TERMS IN 2024

2024 TERM 1	2024 TERM 2
22 January - 28 March	15 April - 21 June
2024 TERM 3	2024 TERM 4
8 July - 13 September	30 September - 6 December





## HIGH SCHOOL PREPARATION (HSP)

CRICOS: 106230E

Start your journey at Shafston International College with our High School Preparation Program. Designed to prepare international students from a wide range of cultural backgrounds, aged between 12 – 17 years old, as an entry pathway into mainstream study at an Australian high school. Develop your English speaking skills, as well reading, writing listening and grammar.

In addition to this, you will study English for STEM\*, CLIL\*\* Intensive Reading program, and learn English in Independent Skills workshops with a special focus on learning essential foundation academic skills to help equip you to achieve successful study outcomes, such as note-taking, mini-oral presentations and individual project work.

### ENTRY REQUIREMENTS

Pre-test required

Entry Level - Beginner (A1)

\*STEM- Science, Technology, Engineering and Mathematics

\*\*CLIL- Content Language Integrated Learning



#### CAMPUS

Brisbane & Gold Coast



#### MODE OF STUDY

25 hours per week



#### DURATION

2 - 64 weeks



#### KEY DATE

Start any Monday



#### AGES

12 - 17



#### LEVEL

6 level - HSP1 to HSP6  
(Each level is 10 weeks in duration)



## HSP SAMPLE TIMETABLE

Time	Mon	Tue	Wed	Thu	Fri
8:30 - 9:45 Class	<b>Core Grammar Input</b> - Rules and Contexts	<b>Core Vocabulary Input</b> - Rules and Contexts	<b>Writing Input</b> - Topic and Structure of Argumentative Essay	<b>Input and Consultation</b> - Weekly Critical Thinking Project	<b>Social Communication Skills</b> - Speaking Activities
9:45 - 10:00	BREAK				
10:00 - 11:15 Class	<b>Core Grammar Input</b> - Rules and Contexts	<b>Core Vocabulary</b> - Applied Communication	<b>Writing Input</b> - Plan and Research for Writing	<b>Student-Led Research</b> - Critical Thinking Project	<b>Unit Review and Tailored Revision</b>
11:15 - 12:00	LUNCH				
12:00 - 13:30 Class	<b>Core Grammar Output</b> - Applied Communication	<b>Listening Comprehension</b>	<b>Writing Output</b> - Argumentative Essay	<b>Critical Thinking Project</b> - Student Presentations	<b>Review Test and Feedback</b>
13:30 - 13:45	BREAK				
13:45 - 14:45 Class	<b>School Vocabulary</b> - History and Society	<b>School Vocabulary</b> - Science	<b>School Vocabulary</b> - Mathematics	<b>School Vocabulary</b> - Geography	<b>Social Sports in the Park</b>

## HSP SAMPLE ASSESSMENT SCHEDULE

Week	Assessment	Weighting	Approximate Length/ Time
1	Speaking 1: Individual Presentation	Speaking grade: 10%	5 mins
2	Listening 1: Comprehension of an oral presentation	Listening grade: 20%	5 mins
3	Writing 1: Short report	Writing grade: 20%	250-300 words
4	Reading 1: Comprehension of an Academic Text	Reading grade: 20%	500 words
5	Speaking 2: Group Presentation (2-3)	Speaking grade: 20%	5 mins
6	Reading 2: Note-taking & comprehension of an academic text	Reading grade: 40%	300 words
	Listening 2: Note-taking from a short recorded lecture	Listening grade: 40%	7 mins
7	Reading 3: Note-taking & summary of an academic text	Reading grade: 40%	400 words
	Writing 2: 3 paragraph comparative essay	Writing grade: 30%	750 words
8	Speaking 3: Tutorial style Group Discussion	Speaking grade: 30%	5 mins
9	Listening 3: Note-taking from a live lecture	Listening grade: 40%	-
10	Writing 3: 5 paragraph essay	Writing grade: 50%	1000 words
	Speaking 4: Individual presentation	Speaking grade: 40%	7 mins

## SHAFSTON HSP ENTRY LEVEL & EXIT LEVEL

Level	Entry Level	Exit Level	Remark*	EQI**
HSP1	IELTS 3.0 or equiv	IELTS 3.5 or equiv.	A successfully completed Shafston internal exam	NA
HSP2	IELTS 3.5 or equiv	IELTS 4.0 or equiv.	A successfully completed A2+ KET exam for schools at Pass A	Year 7 & 8
HSP3	IELTS 4.0 or equiv	IELTS 4.5 or equiv.	A successfully completed B1 PET exam for schools at Pass B	Year 9
HSP4	IELTS 4.5 or equiv	IELTS 5.0 or equiv.	A successfully completed B1 PET exam for schools at Pass A	Year 10
HSP5	IELTS 5.0 or equiv	IELTS 5.5 or equiv.	A successfully completed B2 FCE exam for schools at Pass C	Year 11
HSP6	IELTS 5.5 or equiv	IELTS 6.0+ or equiv.	A successfully completed B2 FCE exam for schools at Pass B for IELTS 6.0 or equiv. or B2 FCE exam for schools at Pass A for IELTS 6.5 or equiv.	

\*Shafston internal exam or external Cambridge exam \*\* This should be used as a guide only



# YOUNG LEARNERS CAMP

**Join our Young Learners Camp and discover the best of Queensland while making new friends from all over the world.**

This program is designed to help students enhance their English language skills and broaden their cultural experiences. In addition to our English Language Program, we also offer them-building activities that foster important skills such as communication leadership, and collaboration. Our dedicated staff ensures a safe and supportive environment where students can develop their language skills and make unforgettable memories.



## CAMPUS

Brisbane & Gold Coast



## ENTRY REQUIREMENT - AGE RANGE

Junior class: 7 - 11 years old\*

Senior class: 12 - 17 years old

\*All children aged 7 - 11 must be signed in and out at the start and finish of each class day by a guardian or chaperone.



## DATES AND DURATION

January to February (2 - 4 weeks)

March (1 week)

July to August (2 - 5 weeks)



2024 SAMPLE SCHEDULE | 8JUL - 9 AUG BRISBANE CAMPUS | JUNIOR CLASS AGE 7-11

Mon	Tue	Wed	Thu	Fri
8 JUL	9 JUL	10 JUL	11 JUL	12 JUL
<b>Morning</b> Orientation (3 hr) <b>Afternoon</b> Ice Break (1 hr)	<b>Morning</b> Young Learner General English Class (3 hr) <b>Afternoon</b> Aboriginal Culture	<b>Morning</b> Young Learner General English Class (3 hr) <b>Afternoon</b> Campus Activities	<b>Morning</b> Young Learner General English Class (3 hr) <b>Afternoon</b> Young Learner General English Class (2 hr)	<b>Morning</b> Young Learner General English Class (3 hr) <b>Afternoon</b> Craft
15 JUL	16 JUL	17 JUL	18 JUL	19 JUL
<b>Morning</b> Young Learner General English Class (3 hr) Orientation - New Starters <b>Afternoon</b> Young Learner General English Class (2 hr) Ice Break (1hr) - New Starters	<b>Morning</b> Young Learner General English Class (3 hr) <b>Afternoon</b> Young Learner General English Class (2 hr)	<b>Morning</b> Young Learner General English Class (3 hr) <b>Afternoon</b> Aussie Wildlife with Wild Rangers	<b>Morning</b> Young Learner General English Class (3 hr) <b>Afternoon</b> Young Learner General English Class (2 hr)	<b>Morning</b> Young Learner General English Class (3 hr) <b>Afternoon</b> Aussie Sports
22 JUL	23 JUL	24 JUL	25 JUL	26 JUL
<b>Morning</b> Young Learner General English Class (3 hr) Orientation - New Starters <b>Afternoon</b> Young Learner General English Class (2 hr) Ice Break (1hr) - New Starters	<b>Morning</b> Young Learner General English Class (3 hr) <b>Afternoon</b> Young Learner General English Class (2 hr)	<b>Morning</b> Young Learner General English Class (3 hr) <b>Afternoon</b> Street Science	<b>Morning</b> Young Learner General English Class (3 hr) <b>Afternoon</b> Young Learner General English Class (2 hr)	<b>Morning</b> Young Learner General English Class (3 hr) <b>Afternoon</b> Craft Class
29 JUL	30 JUL	31 JUL	1 AUG	2 AUG
<b>Morning</b> Young Learner General English Class (3 hr) <b>Afternoon</b> Young Learner General English Class (2 hr)	<b>Morning</b> Young Learner General English Class (3 hr) <b>Afternoon</b> Young Learner General English Class (2 hr)	<b>Morning</b> Young Learner General English Class (3 hr) <b>Afternoon</b> Visit Queensland Museum	<b>Morning</b> Young Learner General English Class (3 hr) <b>Afternoon</b> Young Learner General English Class (2 hr)	<b>Morning</b> Young Learner General English Class (3 hr) <b>Afternoon</b> Farewell Party
5 AUG	6 AUG	7 AUG	8 AUG	9 AUG
<b>Morning</b> Young Learner General English Class (3 hr) <b>Afternoon</b> Young Learner General English Class (2 hr)	<b>Morning</b> Young Learner General English Class (3 hr) <b>Afternoon</b> Young Learner General English Class (2 hr)	<b>Morning</b> Young Learner General English Class (3 hr) <b>Afternoon</b> Visit Queensland Museum	<b>Morning</b> Young Learner General English Class (3 hr) <b>Afternoon</b> Young Learner General English Class (2 hr)	<b>Morning</b> Young Learner General English Class (3 hr) <b>Afternoon</b> Farewell Party

\*The schedule may change without notice

SAMPLE TIMETABLE

8:30am - 10:00am	English class
10:15am - 11:45am	English class
11:45am - 12:30pm	Lunch
12:30pm - 14:30pm	English class or Activities

THE FIRST DAY

8:30am - 11:45am	Orientation
11:45am - 12:30pm	Lunch
12:30pm - 1:30pm	Ice Break



# STUDY TOUR

Our study tour program provides participants a unique and memorable way to enrich their educational and cultural experience. We provide a high level of service and flexibility from a dedicated team, who are there to offer support every step of the way. We provide tuition, activities and tours, accommodation, meals and all transportation for our Study Tours groups.

Benefits of a Study Tour with Shafston College:

- Tailor-made itineraries to meet learning outcomes set out by each group
- We can organise everything from touchdown to take-off so everything is hassle and stress-free
- Experience travel, culture & learning
- Professional teaching staff
- Dedicated Study Tours & Summer Camp team
- On-site Homestay Department
- 24- Hour support & emergency contact numbers
- Graduation ceremony on request
- University style campus in Brisbane



## DEMI PAIRS

A Demi Pair is allows you to experience the Australian culture in a unique way, and also is a great way to save money whilst you study. So, what is a Demi Pair? In exchange for full board, including 'private' accommodation and meals, you will assist with everyday tasks such as help with childcare and light household duties, for 15 hours of work for a 12 week placement. You will receive 24 hour support from our Demi-Pair team throughout the Demi Pair stay including ongoing monitoring of their situation and personalised support as required. Students may have the possibility to renew their placement at the end of the program, depending on their first experience, and visa conditions.

Download Application form  
[Shafston.edu/demi-pair-program/](https://shafston.edu/demi-pair-program/)

✉ Submit: [info@shafston.edu](mailto:info@shafston.edu)





# STUDENT LIVING



## Shafston apartment on site

**Enjoy breathtaking views of the Brisbane River and Brisbane City from our studio apartments. This on-campus accommodation is located above your classrooms offering the ultimate convenience.**

Each apartment is fully furnished with a private bathroom containing a toilet and shower. The kitchenette is equipped with a hot plate, microwave oven, toaster, kettle, and refrigerator.

The property features high speed wireless broadband throughout the building, rooms and communal areas, so no matter where you are within the property you can access the internet.

A student lounge on the fourth floor has a large outdoor balcony, a fully equipped gym with running machines, cycling machines and a variety of weights and exercise equipment completely free of charge for all residents 24 hours a day.

- ✓ Studio with bathroom & kitchenette
- ✓ 24 hour, fully equipped gym
- ✓ On-site management
- ✓ Free wi-fi
- ✓ Student lounge with balcony area
- ✓ Coin operated laundry
- ✓ Weekly cleaning service
- ✓ Secure building with swipe card access



# HOMESTAY

BRISBANE & GOLD COAST

## it's not just accommodation, it's a connection.

Living with a local host family offers you a unique way to experience the Australian multicultural lifestyle while you study English. Live like a local, and partake in the customs of the Aussie culture: the local coffee shops, restaurants, and fun activities that Brisbane and the Gold Coast have to offer, all whilst honing your English language skills.

Staying with an Aussie family is the best way to learn about the community that you will be joining so that you can go out and discover life here with confidence. We have an on-campus Homestay Department to assist students with settling into their 'home' in Australia. With hundreds of homestay families hosting Shafston students, we are able to meet just about any request, and help you if any problems may arise. We pick a family that suits your needs, so you can feel comfortable in your 'home away from home'.

All our families have been inspected and interviewed by our Homestay team prior to becoming a Shafston Homestay family meaning, every adult member of the household must hold a Queensland Government issued Blue Card showing that they meet Government standards for suitability to live with students and children.

Our Homestay staff are always available to help you settle in and help you understand the Australian way. Choose our Airport Transfer Service and our friendly staff will take you right to the front door to introduce you to your Australian Family. Over the years many of our past students have become life-long friends with their Homestay families keeping in touch to this day. Lots of our Homestay families have even been to visit their students years later in their home country; we see families connecting with past students on social media and continuing to share their life experiences with each other long after their students have finished their studies and moved on.



## AIRPORT SERVICE

**To ensure your arrival to Brisbane is convenient and comfortable, choose Shafston's airport greeting service.**

We will arrange one of our friendly and professional drivers to be waiting for you with your name clearly printed on a sign displaying the Shafston logo. You will then be taken directly to your accommodation where our driver will ensure you are settled in. We also offer a Return Transfer Service to help you carry all your shopping souvenirs back home. Our driver will get you there on time and ready to fly.

We also provide 24/7 service and emergency number provided in the confirmation letter to all students requesting this service.

# STUDY AND

# MAKE FRIENDS



## CONTACT US



**SHAFSTON**  
www.shafston.edu

### BRISBANE CAMPUS

46 Thorn St, Kangaroo Point  
Brisbane QLD 4169 Australia

+61 (7) 3249 4111

info@shafston.edu

### GOLD COAST CAMPUS

72 Nerang St, Southport  
Gold Coast QLD 4215 Australia

+61 (7) 3249 4111

info@shafston.edu

RTO CODE: 45694 | CRICOS PROVIDER CODE: 03917H